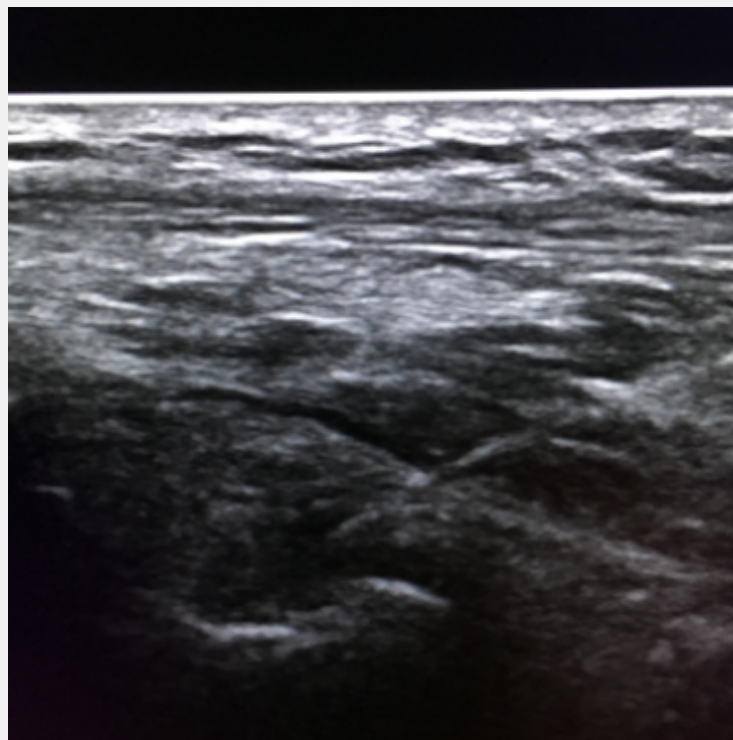
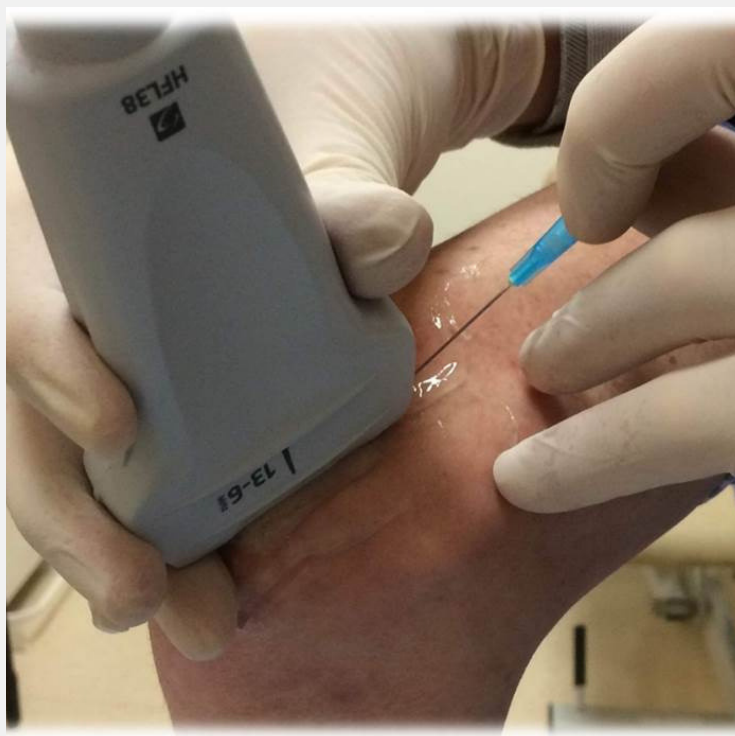




Ultrasound guided injection Posterior elbow



Patient position: Sitting / Lying

Arm position: Arm flexed at the elbow to 90 degrees

Ultrasound: Visualise the posterior recess of the joint, deep to the triceps insertion.

Injection technique: In plane technique from distal to proximal, ensuring the needle tip is visualised in the joint recess.

Suggested needle: Green 21 G 2"

The information is not intended as professional or other advice. Nor is it intended to be a substitute for possession of an appropriate level of training, qualifications, skill and experience in the matters covered. You rely on such information at your own risk.

